

# Warwickshire Education Strategy 2018 - 2023

## VISION

### WE1

Promoting the best possible start in life through early education

### WE2

Unlocking talent, building resilience and fulfilling the potential of our vulnerable learners

### WE3

Empowering education communities so that Warwickshire's Family of Schools can thrive and there are sufficient good/outstanding school places

### WE4

Promoting employability that offers the best possible opportunities for all learners - so that the local economy can grow and young people can take on the responsibilities of adult life



## Warwickshire Education Strategy, Education and Learning

Saltisford Office Park  
Ansell Way  
Warwick  
CV34 4UL

**Tel:** 01926 742588

**email:** [educationstrategy@warwickshire.gov.uk](mailto:educationstrategy@warwickshire.gov.uk)

[www.warwickshire.gov.uk/ask](http://www.warwickshire.gov.uk/ask)



## Education Strategy Consultation

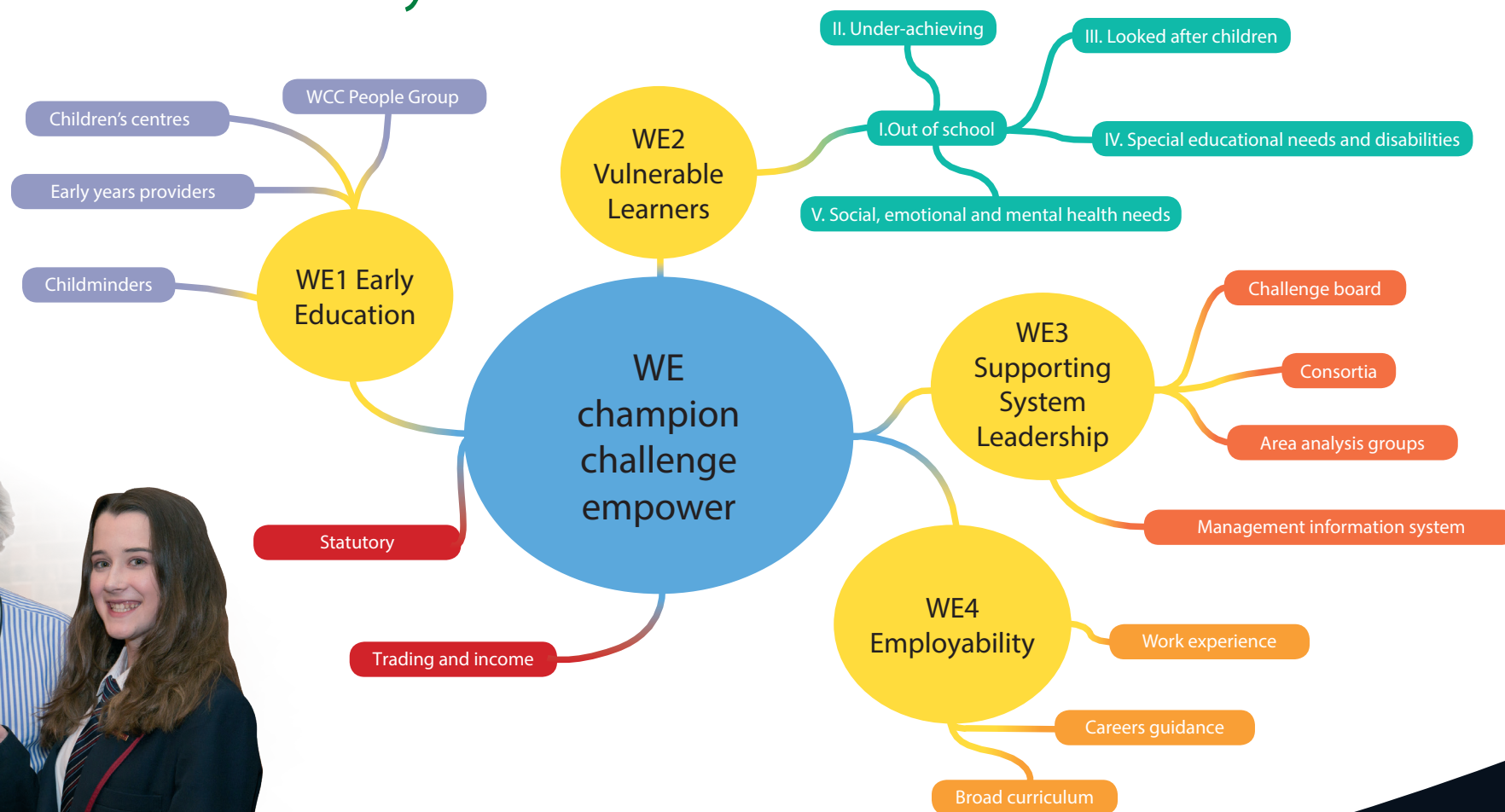
2018 - 2023



Working in partnership so that a good  
education is available to everyone

# Working in partnership so that a good education is available to everyone

Our new Education Strategy will guide and support education in Warwickshire for the next 5 years. It is very important to us that you have a say in what that strategy will be.



Please visit our questionnaire at [www.warwickshire.gov.uk/ask](http://www.warwickshire.gov.uk/ask) to register your comments.